



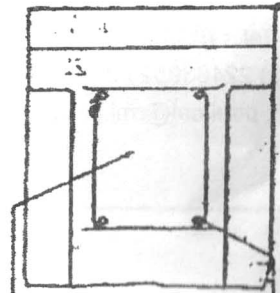
13, 20 & 23 mm DRILL MODEL 14130, 14200 & 14230

Ratti Wolf

ITEM NOT SHOWN
DRAFT [A3-337.1.01] ONLY FOR 14230

- SPACER A5 - 321.1.42
- ONLY FOR : 420 A5-321.1.50
- KEY 275.1.03
- GEAR A3-300.1.46
- [A4-300-47]
- GEAR BOX A3-265.1.24
- BEARING 273.1.08
- WASHER 230.1.15
- SPINDLE (INTER) 2901.51
- [A3-290.1.52]
- GEAR A4 302.1.13
- KEY 275.1.02

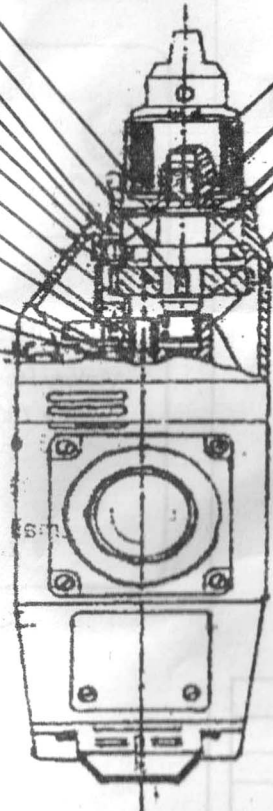
- WASHER 273.1.16
- BEARING A5-223.1.10
- SCREW (4 OFF) 224.1.11



- NAME PLATE A4-349.1.74
- FOR 14230 [A4-351.1.31] [A4-349.1.74]
- SCREW 225.1.02
- (4 OFF)

- SCREW 220.1.02
- (2 OFF)
- CARBON BRUSH A4-251.1.03
- (2 OFF)
- SPARING A4-310.1.08
- (2 OFF)
- SCREW 224.1.03
- (4 OFF)

CARBON BRUSH ASSY



- CHUCK WITH KEY 328.3.03
- ONLY FOR 14200 362.1.06
- SPINDLE A4 - 290.1.43

- BEARING 272.1.87
- CIRCLIP 311.1.44
- CIRCLIP 311.1.45
- BEARING A5 - 273.1.18

- CLAMP A5 - 279.1.50
- CABLE ASSY. A3-403.3.02

- BEARING 272.1.23
- SCREW 220.1.16
- (3 OFF)
- BEARING RETAINER 348.1.24

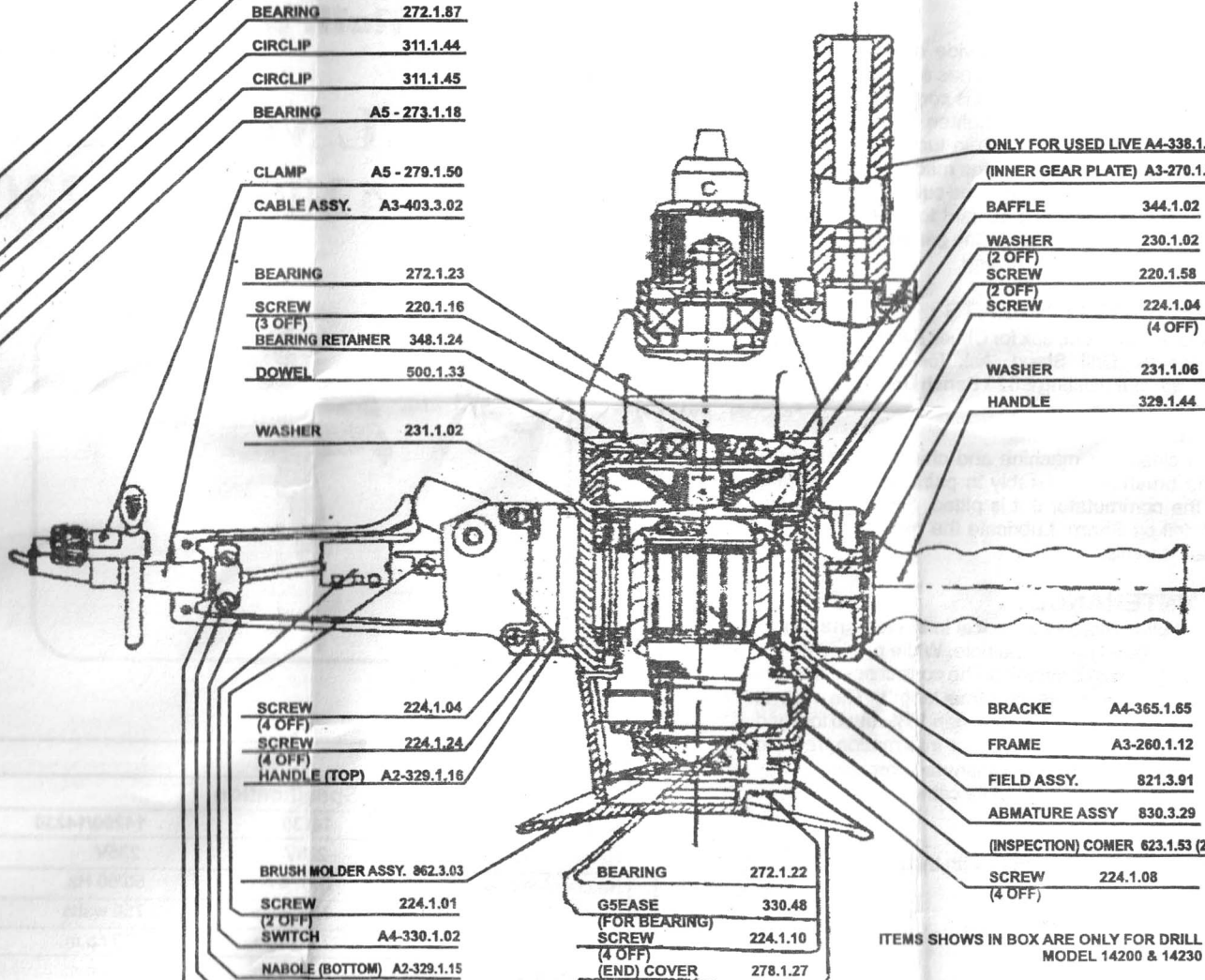
- DOWEL 500.1.33
- WASHER 231.1.02

- SCREW 224.1.04
- (4 OFF)
- SCREW 224.1.24
- (4 OFF)
- HANDLE (TOP) A2-329.1.16

- BRUSH WOLDER ASSY. 862.3.03
- SCREW 224.1.01
- (2 OFF)
- SWITCH A4-330.1.02
- NABOLE (BOTTOM) A2-329.1.15

- SCREW 224.1.03
- (2 OFF)
- CLAMP (CLEAT) 279.1.05

FOR SPARE CARBON BRUSH SET - 251.9.03



- ONLY FOR USED LIVE A4-338.1.01
- (INNER GEAR PLATE) A3-270.1.22

- BAFFLE 344.1.02
- WASHER 230.1.02
- (2 OFF)
- SCREW 220.1.58
- (2 OFF)
- SCREW 224.1.04
- (4 OFF)

- WASHER 231.1.06
- HANDLE 329.1.44

- BRACKE A4-365.1.65
- FRAME A3-260.1.12
- FIELD ASSY. 821.3.91
- ABMATURE ASSY 830.3.29
- (INSPECTION) COMER 623.1.53 (2 OFF)
- SCREW 224.1.08
- (4 OFF)

ITEMS SHOWN IN BOX ARE ONLY FOR DRILL MODEL 14200 & 14230