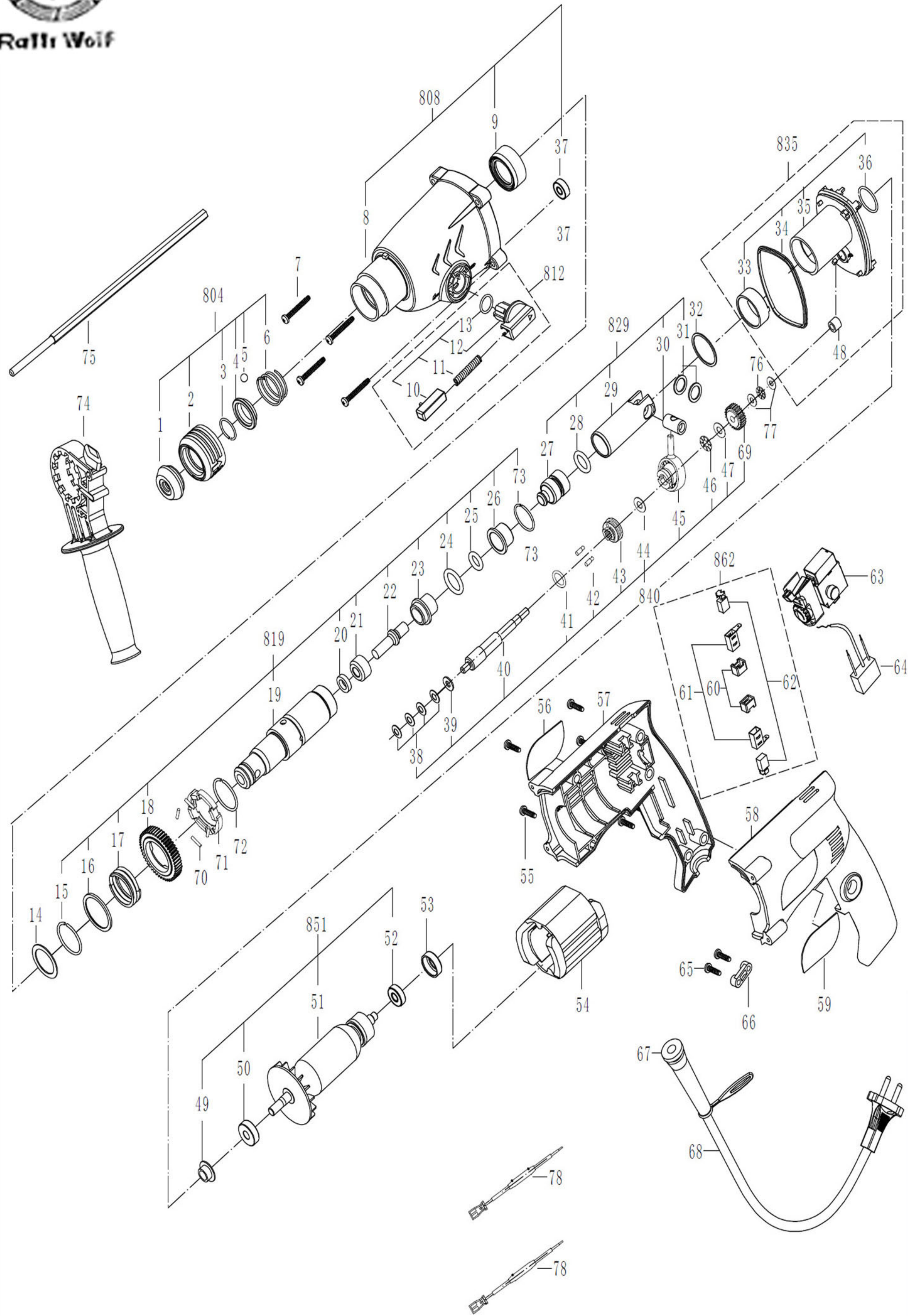




MODEL : 85220 PLUS 22mm/SDS PLUS



PARTS BREAKDOWN

NO.	DESCRIPTION	NO.	DESCRIPTION
1	HOLDER TIP	40	SHAFT, INTERMEDIATE
2	SLIDING COLLAR	41	"O" RING 14.5×2.5
3	CLAMP, METAL	42	PIN, CLUTCH
4	HOLDER, SPRING	43	CLUTCH
5	BALL, STEELΦ7	44	WASHER, BEARING, WOBBLE
6	SPRING TOWN	45	BEARING WOBBLE
7	TAPPING SCREW Φ4.2×30 (4 PCS)	46	BEARING, AXIAL AXK0817
8	CASE, GEAR	47	WASHER, BEARING, AXIAL AS0817 (1 PC)
9	SEAL, OIL	48	BEARING, AXIAL HK0608
10	BUTTON, LOCK	49	RING, SEALING
11	SPRING, LOCK	50	BEARING 608-2RS
12	KNOB, MODE SELECTOR	51	ARMATURE, MOTOR
13	GASKET, LOCK Φ13×1.7	52	BEARING 607-2Z
14	GASKET, METAL, IMPACT SHAFT	53	SLEEVE, BEARING
15	CLAMP, METAL, IMPACT SHAFT	54	STATOR
16	GASKET, METAL, CHAMFERED	55	TAPPING SCREW Φ4.2×19 (6 PCS)
17	SPRING	56	LABEL
18	STRAIGHT BEVEL GEAR	57	BACK HOUSING
19	SHAFT, IMPACT	58	GEAR CASE
20	SEAL, OIL 9×16×4	59	NAME LABEL
21	BLOCK, POSITION	60	HOLDER, PLASTIC (2 PCS)
22	COLUMN, IMPACT	61	HOLDER, BRUSH (2 PCS)
23	SLEEVE, BLOCK	62	BRUSH, CARBON (2 PCS)
24	SEAL, RUBBER Φ18×3.5	63	SWITCH
25	SEAL, RUBBER Φ11×3.15	64	CAPACITOR
26	SLEEVE, RETAINING	65	TAPPING SCREW Φ3.9×18 (2 PCS)
27	RAM	66	CLAMP, CORD
28	SEAL, RUBBER Φ16×2.7	67	SLEEVE, CORD
29	CYLINDER	68	CORD
30	PIN, CYLINDER	69	SMALL GEAR
31	WASHER, CYLINDER PIN (2 PCS)	70	PIN P2.5×12 (4PCS)
32	WASHER, ANTIFRICTION	71	SAFETY CLUTCH
33	BEARING, SLEEVE	72	CLAMP, METAL 28.5
34	GASKET, SEALING	73	CLAMP, METAL 27.5
35	HOLDER, RETAINING, IMPACT SHAFT	74	ASSISTANT HANDLE
36	"O" RING 21.2×2.65	75	DEPTH GAUGE
37	BEARING 606-2Z	76	BEARING, AXIAL AXK0614
38	SPRING, BEVEL (4 PCS)	77	WASHER, BEARING, AXIAL AS0614 (2 PCS)
39	GASKET, METAL	78	CARBON BRUSH WIRE LEAD